



# **SUSTAINABILITY REPORT**

## **2022**

apt Group

# CONTENTS

<b>We are apt</b>	<b>06</b>
<b>Sustainability as a principle for action</b>	<b>10</b>
<b>Production &amp; Products</b>	<b>12</b>
<b>Resources &amp; suppliers</b>	<b>14</b>
<b>Employees &amp; society</b>	<b>16</b>
<b>Ecosystems &amp; Biodiversity</b>	<b>18</b>
<b>Information on the annual and management report</b>	<b>19</b>
<b>Global frameworks &amp; report profile</b>	<b>20</b>
<b>GRI report</b>	<b>22</b>
<b>GRI content index 2022</b>	<b>54</b>





*The protection of the environment and the careful use of resources are our highest priority. We maintain the material cycle and focus on reducing CO2 pollution daily, with the aim of decarbonization by 2044. That is why we rely on regional partners and short delivery routes in our procurement. We achieve our goal with partnership-based, transparent and sustainable business relationships.*



## Foreword



Dear Stakeholders,

I am pleased to present to you today our Sustainability Report for the year 2022. This report marks the second year in which our company has worked intensively and in a structured way on its sustainability agenda. It has been a year of finding, planning and making significant progress that we are proud of.

In this short period of time, we have not only defined our sustainability goals, but also developed and had management approve a comprehensive organisational structure for sustainability. This structure sets the framework for our efforts and gives us the tools to put our vision for a more sustainable future into action.

We are guided by the requirements of the United Nations' 2030 Agenda. At the heart of the Agenda are the 17 Sustainable Development Goals (SDGs), which cover key economic, environmental and social issues. For the apt Group, this means that we ensure that our suppliers and partners adhere to ethical rules and create humane working conditions. We condemn any form of exploitation of people and distance ourselves from all modern forms of slavery.

We are aware that we are at the beginning of a long journey where it is not always clear how we will achieve our goals. The world of sustainability is complex and challenging, but we are determined to make our contribution to environmental protection. We are proud that we can already celebrate some successes, even if we know that the road is still long.

One focus of our efforts in 2022 was on raw materials, which have a significant impact on our carbon footprint. We have taken initial measures to reduce this impact and will work intensively to further optimise our processes and supply chains in the coming years. We are confident that we can make significant progress here.

Transparency is a core value in our sustainability agenda. In this report, we will therefore be as transparent as possible about our efforts and progress. We want you, our stakeholders, to understand what we are doing and to understand our achievements and challenges.

We firmly believe that sustainability is not only a responsibility, but also an opportunity. An opportunity to innovate, to break new ground and to create long-term value. We are ready to seize this opportunity and continuously strengthen our commitment to sustainability.

However, it is important to note that many harmonisation efforts are still needed within our industry. Cooperation and coordination between companies, industry associations and governments are crucial to achieve sustainable change on a global scale. We stand ready to actively participate in these efforts and share our experiences.

We would like to thank all our staff, customers, partners and stakeholders who have been with us on this journey. Your commitment and support are invaluable and we look forward to continuing this journey together with you.

In our Sustainability Report 2022 you will find detailed information on our goals, progress and our plans for the future. We are determined to make our company more sustainable and to make a positive contribution to society and the environment.

Thank you for your interest and support.

Lets advance sustainability,

**Michael Zint**  
*CEO apt Gruppe*

## Facts and Figures 2022

**380** Million euros

in revenues generated by the group in 2022



approx. **1.000**

Employees in the Group are our key to success



**80.000** t

of production capacity for extruded aluminium profiles

**15.000** t

of production capacity for mechanical processing



**18.000** t

of aluminium process scrap is recycled in our foundry every year



**1.299** t\*

CO<sub>2</sub>e-Emissions are emitted during the day

\* Extrusion facilities only



**1.372** m<sup>3</sup>

of water is consumed per day



**180,2** MWh

of electricity is consumed per day



**140** audits

were carried out in 2022



# Aluminium competence for over 50 years

## 360° service for discerning customers

### From raw material to end product

The apt Group is one of the leading company groups in the European aluminium industry. We produce, process and distribute aluminium profiles and products for the construction, transport, automotive and industrial sectors.

With its four production sites, the Group is divided into the divisions of apt Extrusions and apt Products (further processing). It thus covers the entire value-added chain of aluminium processing - from development, recycling, extrusion, mechanical processing, surface finishing (anodising and powder coating), assembly, packaging and logistics.

### Automated Production

We manufacture series products as well as extremely sophisticated individual parts in one-piece flow. Our modern and efficient production facilities are fully automated and flexible.

### The advantage for our customers

- » Extensive engineering know-how for aluminium processing
- » Attractive delivery times with maximum flexibility in processing
- » Products manufactured in an environmentally friendly manner from a single source
- » Products meet the strict European quality, environmental and social standards



# apt – Aluminium Product Technology


The one-stop shop for high-quality aluminium products



**apt Holding GmbH**

The holding company is responsible for the strategic direction of the Group and provides technical support through central functions.

**apt Extrusions GmbH & Co. KG**



**Monheim am Rhein (Deutschland)**

- » **Extrusion**
  - » 4 Production lines
- » **Anodising**
  - » 4,5 Million. m<sup>2</sup>
- » **Remelting**
  - » 18.000 t
- » **Mechanical processing**

**apt Extrusions B.V.**



**Roermond (Niederlande)**

- » **Extrusion**
  - » 2 Production lines
- » **Anodising**
  - » 2,5 Million. m<sup>2</sup>
- » **Mechanical processing**

**apt Products GmbH**



**Eckental (Deutschland)**

- » **Profile & Sheet Metal Processing**
- » **Powder-coating**
- » **Center of Excellence:**  
(Lightweight) bus flaps and door frames, components for e-mobility

**apt Products s.r.o.**



**Cheb (Tschechien)**

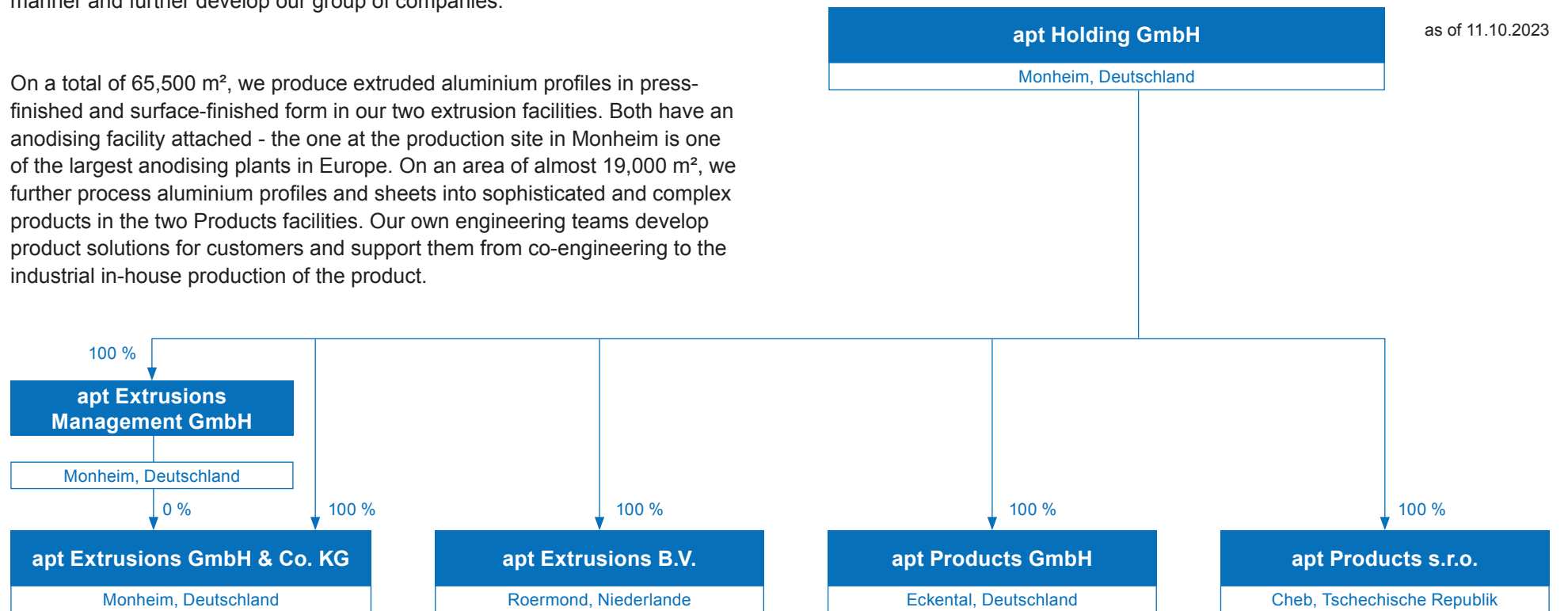
- » **Profile & Sheet Metal Processing**
- » **Mechanical processing**
- » **Center of Excellence:**  
Heat sink, guide rails, motor housing, assembly





The corporate headquarters of the group is apt Holding GmbH in Monheim am Rhein. The holding company controls and plans the strategy of the subsidiaries. With central functions in the areas of Business Development, CSR, Finance, Human Resources, IT and Digitalisation, Marketing & Communication, we support our companies in the execution of the specified strategy in a specialist manner and further develop our group of companies.

On a total of 65,500 m<sup>2</sup>, we produce extruded aluminium profiles in press-finished and surface-finished form in our two extrusion facilities. Both have an anodising facility attached - the one at the production site in Monheim is one of the largest anodising plants in Europe. On an area of almost 19,000 m<sup>2</sup>, we further process aluminium profiles and sheets into sophisticated and complex products in the two Products facilities. Our own engineering teams develop product solutions for customers and support them from co-engineering to the industrial in-house production of the product.



# Sustainability as a principle for action

## Aluminium goes green

Our vision is to transform aluminium production in line with society's demands for sustainable development. In doing so, we focus on the areas of production & products, Customers & Partners, Resources & Suppliers and Employees & Society.

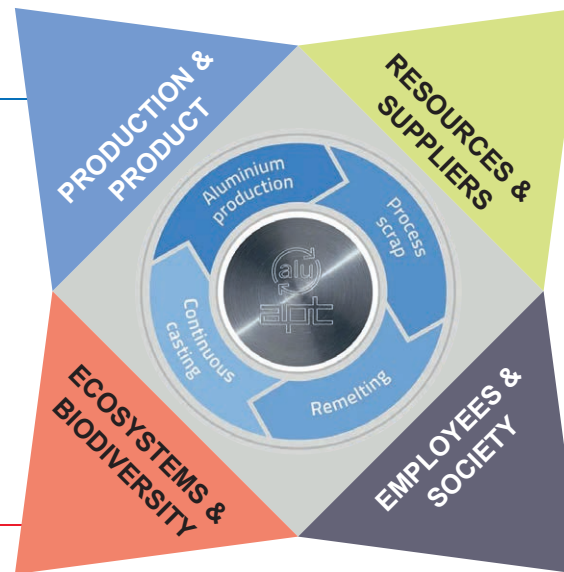
Our products must meet high standards of quality and environmental friendliness. Our quality promise also includes the continuous improvement of production processes. → See p. 12

Local biodiversity plays a crucial role in every ecosystem. In our regions, too, there are specific species and habitats that are particularly worthy of protection. → See p. 18

For us, sustainability begins with the procurement of the valuable raw material aluminium. We have selected our global suppliers according to strict criteria. → See p. 14

Our employees are our most important resource. They see themselves as a team made up of different personalities. Diversity is a living principle at apt, which continues beyond working hours in joint leisure activities - across nations, locations and cultures.

Social commitment is also clearly anchored in our values. → See p. 16



Our mission is to offer our customers everything in the field of aluminium processing from a single source with high quality standards, security of supply and flexibility. The two extrusion facilities take over the process steps of remelting, extrusion and surface finishing as well as simple mechanical processing.

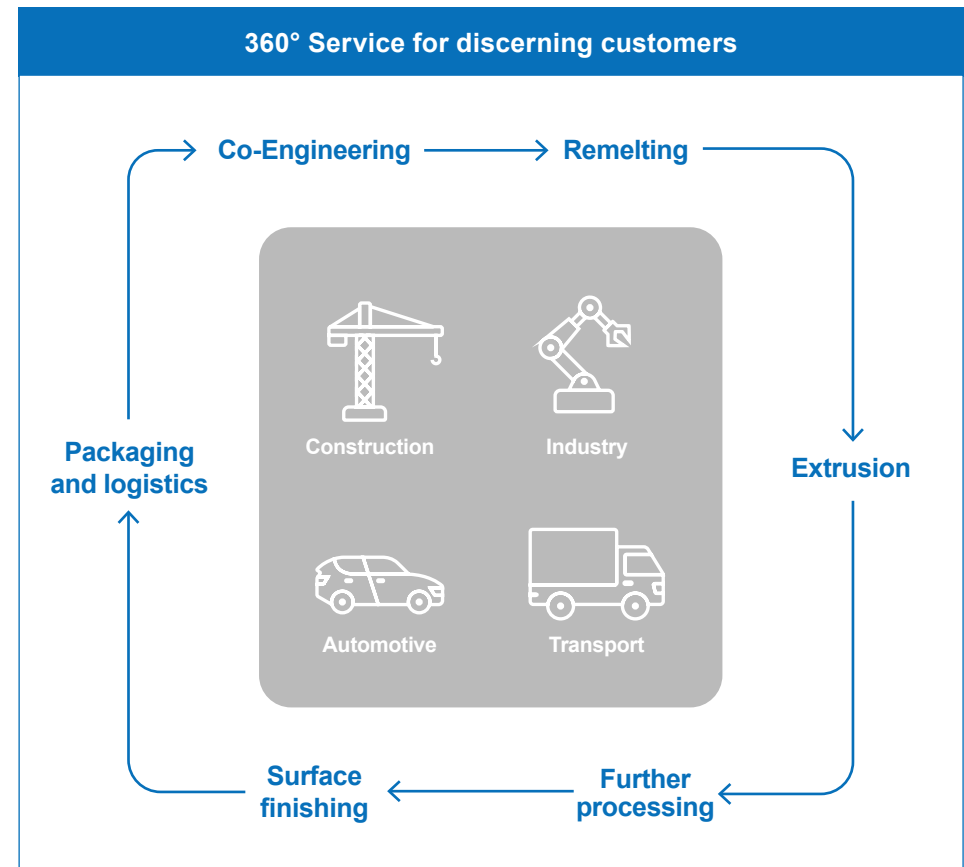
Co-engineering and further processing, e.g. forming, sawing and cutting, CNC turning and CNC milling, punching and nibbling, embossing and deep-drawing, welding or joining and gluing, are primarily carried out by the Products facilities.

► **Markets: automotive, construction, industry, transport**

Essential parts. Essential partners. This is the DNA of our strategy. We focus on the automotive, construction, industry and transport markets in order to supply them with technologically sophisticated products and solutions.

► **Future proof with new technologies**

At all levels of the customer-supplier relationship, we enter into partnerships and cooperations that are the foundation of our current success. We will continue to build on this and future-proof our customer and product portfolio with a view to establishing and expanding further processing steps and integrating new technologies and developments.



## Production & Products

The apt Group supplies its customers worldwide with innovative, high-quality aluminium products and complex solutions. Our aluminium products and solutions are used in the construction, transport, automotive and industrial sectors.

### Extrusion

We manufacture custom-fit aluminium extrusions according to individual customer requirements using innovative and fully automated process technology. With our extrusion lines, we have an extrusion capacity of 80,000 tonnes per year. Our service ranges from consulting and co-engineering to prototyping and efficient series production.

### Further processing

We process aluminium profiles and sheets. Here we offer our customers the entire process from product development and machining to finishing and assembly. Using intelligent production concepts, we realise small and large series, one-off productions and prototypes. Through precisely coordinated process steps and innovative technologies, we achieve maximum production efficiency.

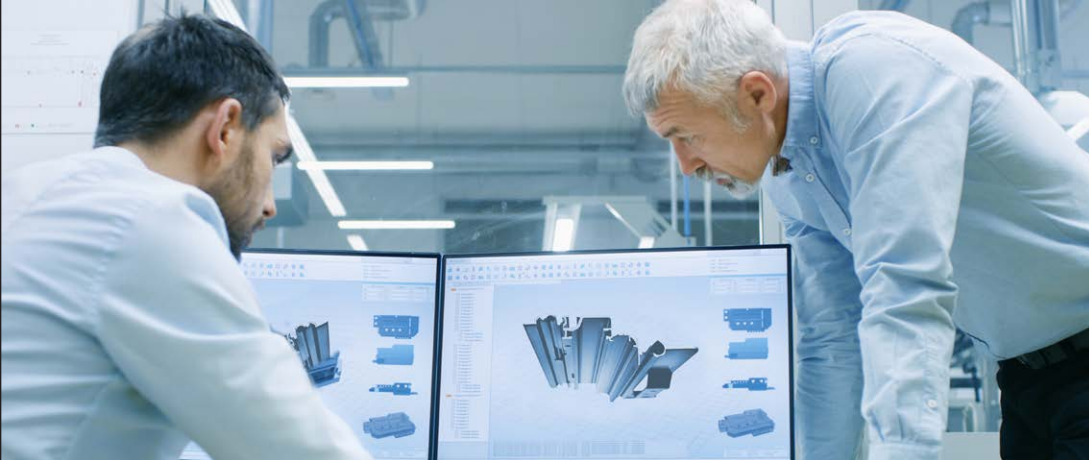
### Certified quality management

*„Quality is when everything is right. From the start.“*

Quality has many facets: perfect products, clearly defined processes, adherence to deadlines, comprehensive customer service, efficient production, tight controlling and state-of-the-art communication tools are all part of it. To ensure that we can guarantee this quality at all times, our organisation and production are subject to a continuous optimisation process. In addition, our production companies are regularly certified according to international standards.

- ▶ **ISO 9001 : 2015**      The quality management system at all locations has been set up and certified according to the requirements of the ISO 9001 standard.
- ▶ **ISO 14001 : 2015**      All facilities are certified according to the international environmental management standard ISO 14001 certificate.
- ▶ **ISO 50001 : 2018**      An energy management system in accordance with the globally valid ISO 50001 standard has been introduced at both extrusion facilities and at apt Products GmbH and is used in the areas of bar extrusion, anodising and the supply of aluminium profiles.

Further certifications can be found on our website under:  
[www.apt-alu-products.com/nachhaltigkeit/qualitaetsmanagement](http://www.apt-alu-products.com/nachhaltigkeit/qualitaetsmanagement)



### Goals for 2030

We are currently in the process of developing a transformation strategy. This will result in goals as well as the management approach in the area of production and products.

### Measures and implementation

Concrete measures for the implementation of the goals yet to be defined will emerge in the further course of the development of the transformation strategy.

The following have already been implemented:

- » Calculation of our CO<sub>2</sub>e-Balance sheet as a data basis for the development of a decarbonisation strategy in the two extrusion facilities
- » Optimisation of process management

The following measures are currently being implemented:

- » Development and implementation of a materiality process
- » Development of a decarbonisation strategy
- » Development of the Aluminium 2030 model factory
- » Optimisation of the circular economy

Measures already taken are adapted, if necessary, in the course of the process.

## Resources and suppliers

For us, sustainability begins with the procurement of the valuable raw material aluminium. The area of resources and suppliers therefore plays a decisive role in our sustainable development.

We screen our aluminium suppliers in accordance with the OECD International Due Diligence Guidance on Promoting Responsible Supply Chains for Minerals from Conflict and High-Risk Areas. We did not identify any risks in 2022.

We review this annually to avoid involvement in armed conflicts or human rights violations. We do not tolerate these in any way.

### Sustainability criteria for raw material suppliers

- » Production of primary aluminium using hydropower and geothermal energy with the aim of further reducing CO<sub>2</sub>e-emissions in the manufacturing process and in our products
- » Recycling of secondary aluminium for the production of billets at facilities located close to our production sites with the aim of lower energy consumption and short transport routes
- » Security of supply
- » Competence in research and development of raw materials for special applications
- » Certifications, including ISO 9001, ISO 14001, ISO 14025, ISO 14064, ISO 50001, IATF 16949
- » Memberships of organisations, including ASI, AUF, Metalle pro Klima, Cradle to Cradle Certified™ Product standard

### Sustainable resource management

As part of our proactive environmental, energy and quality management, we control - both internally and externally - the sustainable use of the resources we use. Proactive management is part of the continuous process improvement system.

#### ► EXTERNAL

In order to shape a sustainable future, we contribute our many years of experience and know-how as an active member of selected organisations and associations. For example, we work together on solutions in Aluminium Deutschland e. V. and the Association for the Surface Treatment of Aluminium. This includes, for example, the Recycling Working Group of the Aluminum Deutschland Association, in which we actively participate.

#### ► INTERNAL

Our quality promise includes the continuous improvement of our production processes. We pay particular attention to environmental protection, especially the careful use of resources. In project teams, we work intensively on new solutions in the areas of energy and the environment. And we do this every day.



## Goals for 2030

As a big next milestone, we want to reduce our input material, which accounts for about 91 % of our CO<sub>2</sub>e-footprint, to a value of 4 t CO<sub>2</sub>/t of aluminium or lower.

Further goals for the following areas will be defined with the development of the transformation strategy:

- » Supply chain transparency
- » Resource efficiency

## Measures and implementation

### ► RESOURCES

As one of the most sustainable metals on earth, aluminium can be recycled again and again without any loss of quality - and with only approx.

5 % of the energy required for primary aluminium production. In our own remelting plant for recycling, process scrap is remelted into billets before it is returned to our processing plant. We can recycle up to 18,000 tonnes of aluminium annually.

Other measures in the area of resources:

- » Use of low carbon aluminium
- » Use of aluminium from external recycling facilities in compliance with strict European quality, environmental and social standards

### ► SUPPLIERS

All new suppliers of core materials relevant to production were assessed for quality and environmental criteria in 2022. A supplier evaluation of all suppliers via Ecovadis was initially introduced in 2022 for apt Extrusions GmbH & Co. KG. The introduction of Ecovadis is planned for apt Extrusions B.V. in 2023 and for the Products facilities in 2024.

## Employees and society

People are the focus of the Employees and Society division.

Our value-oriented corporate culture creates respectful interaction with colleagues, customers and suppliers.

### Living Values

Our values have shaped our corporate culture for more than 50 years and are lived by all our employees every day. They form the basis for our success and accompany the further development of our company.

### Trust, partnership, passion

Passion, enthusiasm and competence are our driving forces. We approach new tasks with joy. In doing so, we support each other and are respectful and loyal. Our interaction with customers and suppliers as well as within apt is based on trust and partnership. This has resulted in long-standing relationships that we maintain and continue to develop. Together we want to shape the future.

### The joy of learning

We work in a results-oriented manner and take pleasure in lifelong learning. Teamwork and consistent further training, among other things in our in-house apt Academy, provide us with the necessary know-how as well as flexibility and decision-making security in daily competition.

### Engagiert, vielfältig, weltoffen

Our committed and highly motivated employees are our most important resource. They see themselves as a team made up of different personalities. Diversity is a living principle at apt, which continues beyond working hours in shared leisure activities - across nations, locations and cultures.





### Goals for 2030

- » Increase diversity
- » Deepen the understanding of sustainability
- » Development of sustainability competence among employees
- » Increase employee health and safety

### Measures and implementation

#### ► EMPLOYEES

An increased focus is placed on the topic of employee health and safety and is underpinned by goals and measures in the area of accident prevention, PPE policy and improving the ergonomics of workplaces.

A process for employee qualification is applied at all locations, because employees want to develop and we offer them the opportunities to do so: through apprenticeships, personal development plans, a special programme to promote young talent, language courses and internal training.

A communication campaign is also planned to attract more women as employees.

#### ► SOCIETY

We support regional organisations and projects such as the Lions Club in Monheim, the "Ein Kinderlachen schenken" campaign run by Kinderhilfe Eckental, the KiKa children's cancer charity in Amstelveen in the Netherlands or the St. Georg Hospice in Cheb in the Czech Republic. At events such as the Long Night of Industry, our German pressing plant opens its doors and takes visitors "behind the scenes".

# Ecosystems and biodiversity

Local biodiversity plays a crucial role in any ecosystem. It helps maintain the balance and stability of the ecosystem and the ability to regenerate and adapt to change.

In our regions, too, there are specific species and habitats that are particularly worthy of protection.



## Goals for 2030

Implementing the measures from the biodiversity analyses at all sites and regularly reviewing the impact of the measures and our activities.

## Measures and implementation

### ► ANALYSIS OF BIODIVERSITY

Sound decision-making is based on solid data, which is why we have placed great emphasis on collecting and analysing data on biodiversity at our sites in Roermond and Monheim.

In cooperation with external experts, we have collected information on biodiversity, habitat conditions and the impact of our activities on biodiversity. This data not only helps us to better understand our own impacts, but also to take targeted action to protect and promote biodiversity.

The biodiversity analysis of our Products facilities is planned for 2024.

### ► MEASURES TO PROTECT SPECIES DIVERSITY

Based on the recommendations of the biodiversity analysis, the lighting intensity in the outdoor area in Monheim was adjusted. The greening of roof areas is also planned there for 2023.

# Information on the annual and management report

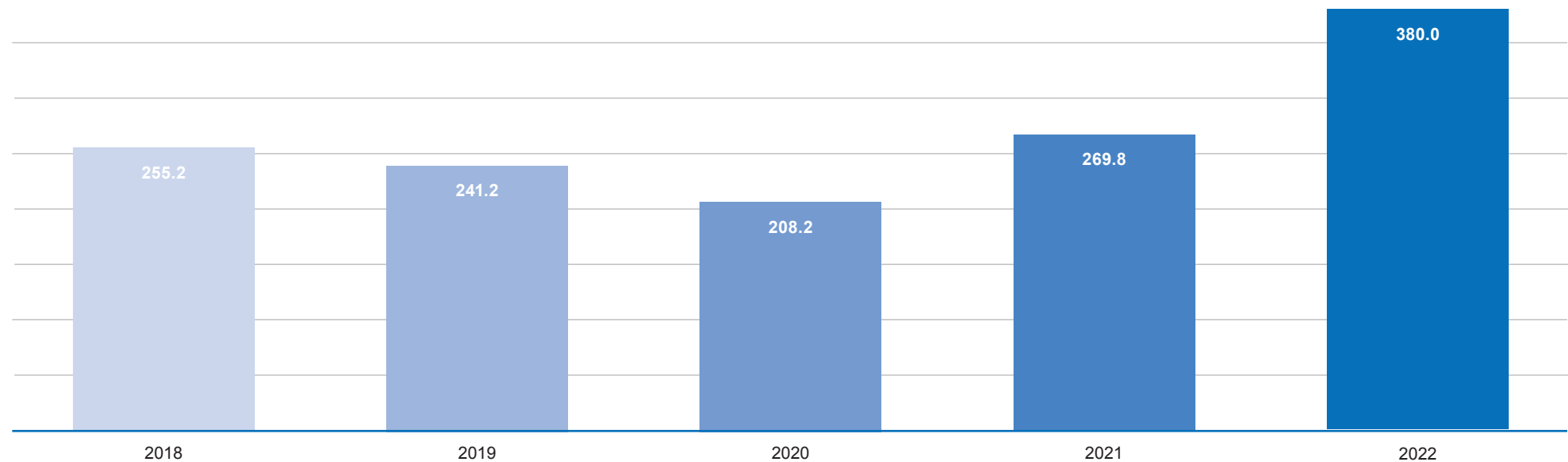
## Highlights of 2022

### apt Group

In the overall view of the year 2022, the economic environment of the German aluminium industry is very challenging. In addition to the still noticeable effects of the Corona pandemic, the war in Ukraine and the associated energy crisis had a particularly strong impact on the economic situation, especially in the second half of the year. Despite all this, expectations were clearly exceeded.

The still ongoing Ukraine war with its unforeseeable impact on the economic and social fabric of our economies makes it almost impossible to make reliable risk and opportunity assessments for the year 2023.

### Consolidated revenues of the apt Group (in millions of euros)



# Global frameworks and report profile

## SDGs and the EU Green Deal

Political frameworks form the basis for our sustainable development. On the one hand, we refer to the 17 global goals for sustainable development of the United Nations, the SDGs (Sustainable Development Goals). They are political goals that are intended to serve sustainable development worldwide on an economic, social and ecological level.

Secondly, we are developing our measures in line with the goals of the EU Green Deal. This involves reducing net greenhouse gas emissions, decoupling growth and resource consumption through circular economy and compliance with social standards in the supply chain.

### CORE GOALS

	<p><b>8</b> DECENT WORK AND ECONOMIC GROWTH Promote decent work and sustainable economic growth</p>		<p><b>9</b> INDUSTRY, INNOVATION AND INFRASTRUCTURE Building resilient infrastructure, supporting widespread and sustainable industrialisation</p>		<p><b>12</b> RESPONSIBLE CONSUMPTION AND PRODUCTION Ensure sustainable consumption and production patterns</p>		<p><b>13</b> CLIMATE ACTION Take immediate action to combat climate change and its impacts</p>
--	---	--	--	--	--	--	--

### OTHER GOALS


## About this report

This is the apt Group's second sustainability report. It was prepared in accordance with the GRI standards. The data and key figures for the 2022 financial year (01.01. - 31.12.2022) are presented.

GRI 1 Foundation 2021, GRI 2: General Disclosures 2021 and GRI 3: Material Topics 2021 were used to prepare this report. We refer to the corporate activities of the two extrusion plants apt Extrusions GmbH & Co. KG in Germany and apt Extrusions B.V. in the Netherlands, as well as the two Products plants apt Products GmbH in Germany and apt Products s.r.o. in the Czech Republic.



## GRI 2: General disclosures

### GRI 2 – 1

#### Organisational details

##### apt Holding GmbH

Rheinpromenade 11  
40789 Monheim am Rhein  
Deutschland

The apt Group operates in three European countries: Germany, Netherlands, Czech Republic.

### GRI 2 – 2

#### Entities included in the organisation's sustainability reporting

##### apt Extrusions GmbH & Co. KG

Daimlerstraße 10  
40789 Monheim am Rhein  
Deutschland

##### apt Extrusions B.V.

Industrieweg 8  
6045 JG Roermond  
Niederlande

##### apt Products GmbH

Orchideenstraße 2  
90542 Eckental  
Deutschland

##### apt Products s.r.o.

Průmyslový park 33/22  
35002 Cheb – Dolní Dvory  
Tschechien

### GRI 2 – 3

#### Reporting period, frequency and contact point

##### Reporting period:

01 January 2022 - 31 December 2022 - The reporting period for this first update report is 1 year. Subsequently, sustainability reporting will be done annually.

##### Publication date:

13 November 2023

##### Contact for questions regarding the sustainability report:

Manon Gahmann

##### Reporting period financial reporting:

01 January 2022 - 31 December 2022

### GRI 2 – 4

#### Restatements of informationen

The organisation did not make any adjustments during the reporting period.

### GRI 2 – 5


#### External audit

This report has not been subject to an external audit. The highest governance body CEO Michael Zint and the apt Sustainability Committee is entrusted with the review of the report.

**GRI 2 – 6**

**Activities, value chain and other business relationships**

apt Holding GmbH and its subsidiaries, operate in the aluminium sector serving the following markets, among others

			
CONSTRUCTION	TRANSPORT	AUTOMOTIVE	INDUSTRY
<p>Aluminium profiles and construction parts for the following areas of application:</p> <ul style="list-style-type: none"> <li>» Construction</li> <li>» Sun protection systems</li> <li>» External cladding and roofing</li> <li>» Interior fittings</li> <li>» Agricultural systems</li> <li>» Infrastructure and street equipment etc.</li> </ul>	<ul style="list-style-type: none"> <li>» Door frames and body panels for buses</li> <li>» Trailer solutions, such as front bulkhead profiles, roof beams, dropside profiles, base skirting boards, underrun guard profiles</li> </ul>	<ul style="list-style-type: none"> <li>» Guide rails for car roof systems</li> <li>» Convertible roof components</li> <li>» Car accessories</li> </ul>	<p>Aluminium profiles and construction parts for the following areas of application:</p> <ul style="list-style-type: none"> <li>» Mechanical and systems engineering</li> <li>» Electronic technology</li> <li>» Medical equipment</li> </ul>

	Reporting year 2021	2022
<b>Production figures p.a.</b>		
<b>Extrusion</b>		
apt Extrusions GmbH & Co. KG (DE)	42,634 t	39,540 t
apt Extrusions B.V. (NL)	27,647 t	27,251 t
apt Products s.r.o. (CZ)	1,613 t	1,719 t
<b>Sheet metal &amp; profile processing</b>		
apt Products GmbH (DE)	1,100 t	–
<b>Total</b>	<b>72,994 t</b>	<b>69,680 t</b>
<b>Adonising</b>		
apt Extrusions GmbH & Co. KG (DE)	3,347,164 m <sup>2</sup>	2,845,033 m <sup>2</sup>
apt Extrusions B.V. (NL)	2,095,660 m <sup>2</sup>	1,820,411 m <sup>2</sup>
apt Products GmbH (DE)	300,000 m <sup>2</sup>	–
apt Products s.r.o. (CZ)	414,272 m <sup>2</sup>	471,207 m <sup>2</sup>
<b>Powder coating</b>		
apt Products GmbH (DE)	15,000 m <sup>2</sup>	21,800 m <sup>2</sup>
<b>Total</b>	<b>6,172,096 m<sup>2</sup></b>	<b>5,158,451 m<sup>2</sup></b>

	Reporting year 2021	2022
<b>Number of customers</b>		
apt Extrusions GmbH & Co. KG (DE)	373	357
apt Extrusions B.V. (NL)	209	182
apt Products GmbH (DE)	31	30
apt Products s.r.o. (CZ)	30	28
<b>Total</b>	<b>643</b>	<b>597</b>

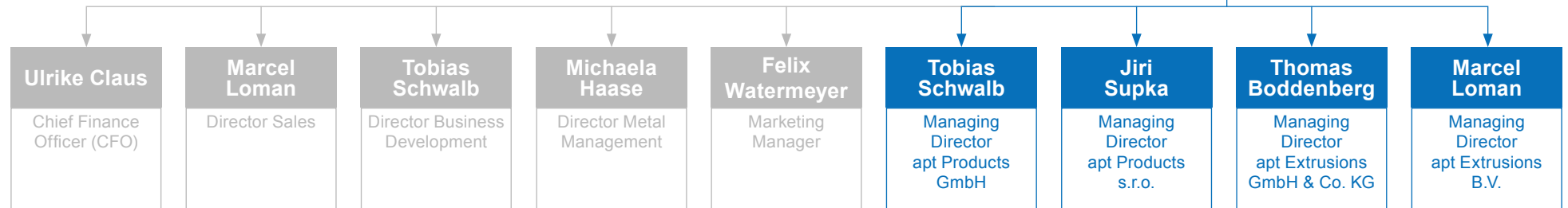


**GRI 2 – 7**

**Employees and staff**

	apt Extrusions GmbH & Co. KG (DE)		apt Extrusions B.V. (NL)		apt Products GmbH (DE)		apt Products s.r.o. (CZ)	
	2021	2022	2021	2022	2021	2022	2021	2022
Employees (F)	28	29	3	13	9	10	81	91
Employees (M)	269	286	105	144	46	54	155	168
Trainee	7	7	0	2	0	0	3	9
Part-time	5	8	9	15	6	0	1	0
Full-time	292	307	99	142	49	62	235	259
Permanent positions	280	303	95	157	55	54	134	120
Temporary positions	17	12	13	0	0	10	102	139
<b>Total</b>	<b>297</b>	<b>315</b>	<b>108</b>	<b>157</b>	<b>55</b>	<b>64</b>	<b>236</b>	<b>259</b>

As of: 31st December 2021 and 31st December.2022



As of: 1. September 2022

**GRI 2 – 9**

**Governance structure and composition**

See organisational diagram below.

**GRI 2 – 11**

**Chair of the highest governance body**

See organisational diagram below.

### GRI 2 – 12

#### Role of the highest governance body in overseeing the management of impacts

apt Holding GmbH is responsible for the strategic orientation of the apt Group and provides specialist support through central functions.

### GRI 2 – 14

#### Role of the highest governance body in sustainability reporting

This report and the main topics were reviewed by the highest governance body and approved for publication. This was done in three independent reviews:

- » Review and evaluation of the material topics by the apt Sustainability Committee
- » Gathering and review of the reporting information by the responsible managers
- » Review and approval of the final report by the CEO.

### GRI 2 – 16

#### Communication of critical concerns

In the reporting year, no complaints were received at any of the locations - with the exception of claims.

### GRI 2 – 17

#### Collective knowledge of the highest governance body

As part of the transformation strategy development process, the highest management body and the management level of all apt Group facilities are involved in the development. To ensure quality, this process is accompanied by an external sustainability consultancy service.

### GRI 2 – 26

#### Mechanisms for seeking advice and reporting concerns

At apt Extrusions GmbH & Co. KG, it is planned to introduce a complaint management / whistleblower system by Q1 2023. This will be implemented for the entire Group by the end of 2023.

**GRI 2 – 27**
**Compliance with laws and regulations**

There were no violations of laws and regulations by apt Holding GmbH, apt Extrusions GmbH & Co. KG(DE), apt Extrusions B.V. (NL) apt Products GmbH (DE) or aptProducts s.r.o.(CZ) and no fines or sanctions were imposed.

**GRI 2 – 28**
**Membership in associations and interest groups**

In order to shape our future sustainably, we contribute our many years of experience and know-how as an active member of selected organisations and associations. For example, we work together on solutions in the Totalverband der Aluminiumindustrie and the Verband für die Oberflächenveredelung von Aluminium. This includes, for example, the Recycling Working Group of the Aluminium Deutschland Association, in which we actively participate.

- » Member of the Aluminium Stewardship Initiative
- » Active member of the Aluminium Deutschland Association
- » Active member of the Verband der Oberflächenveredelung von Aluminium
- » Member of ION (Dutch industrial surface treatment organisation)
- » apt Products GmbH is a member of vbm – Verband der Bayerischen Metall und Elektro-Industrie e. V.

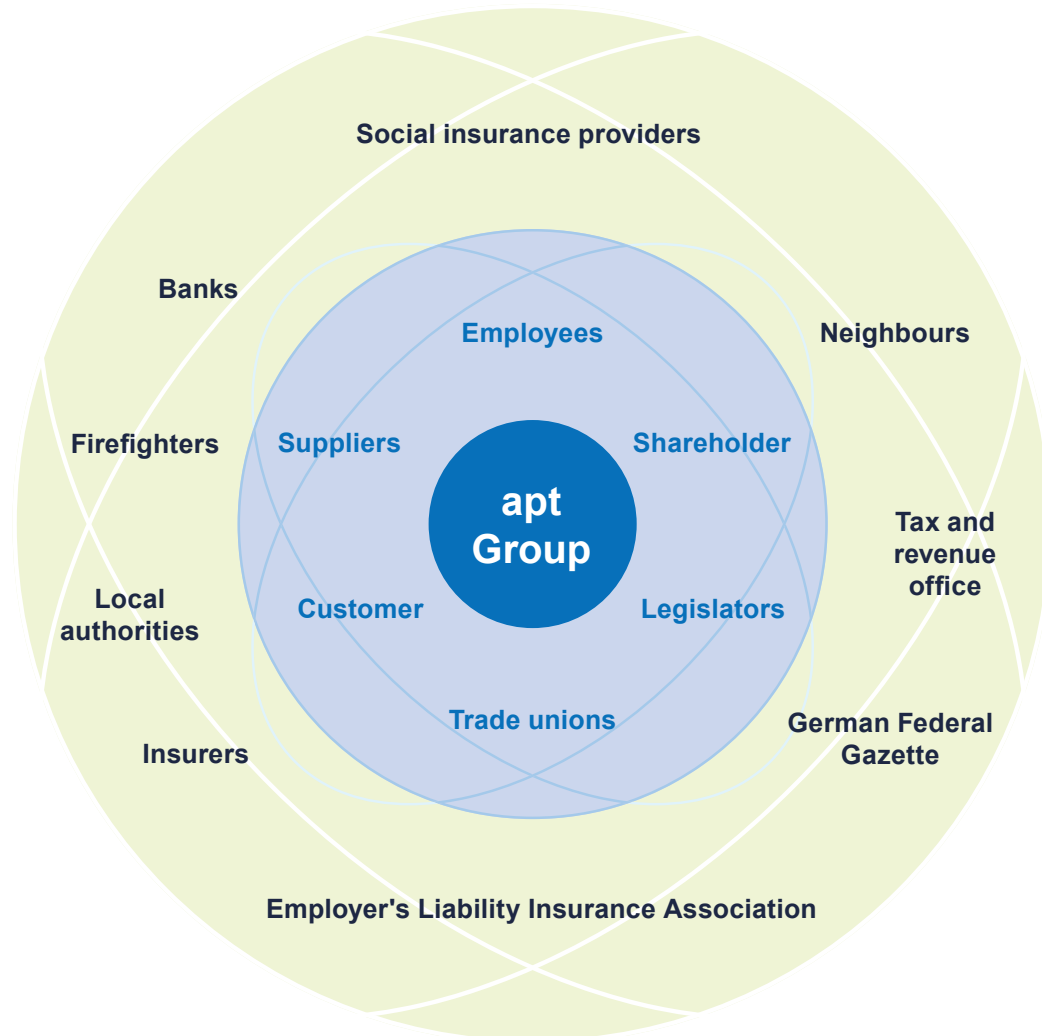


**GRI 2 – 29**

**Approach to stakeholder engagement**

The apt Group's stakeholders were defined within the framework of DIN EN ISO 9001. An overview is provided in the adjacent diagram.

One of the tasks in the strategy development process is to allocate stakeholders to stakeholder groups. Stakeholder engagement is in place with customers, employees and suppliers. Developing a fully fledged stakeholder engagement process will form part of the transformation strategy.



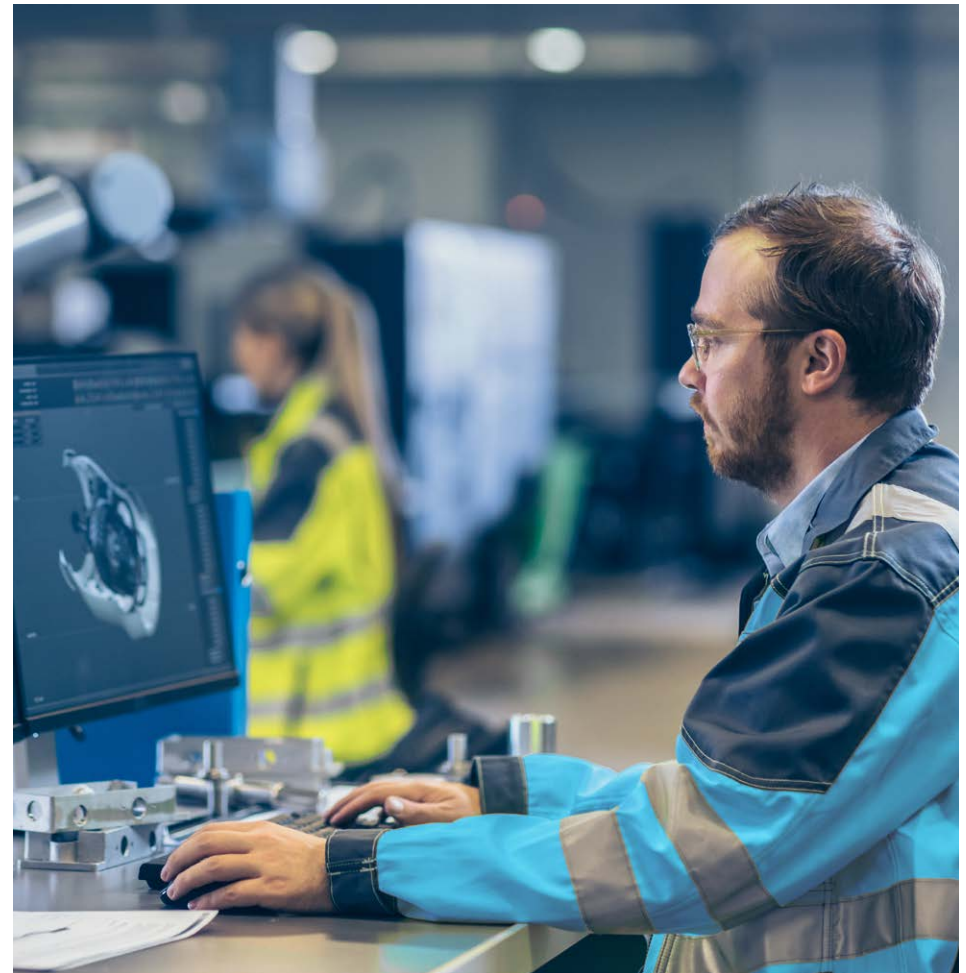
**GRI 2 – 30****Collective bargaining agreements**

apt Extrusions GmbH & Co. KG falls within the scope of the sectoral collective agreement for the metal and electrical industry in North Rhine-Westphalia. 95.25 % of employees are covered by this collective agreement. The remaining 4.75 % not covered by the agreement are predominantly management staff.

apt Extrusions B.V. are covered by a collective agreement based on CAO Metalektro, which covers 100% of the employees.

There is no collective bargaining agreement at apt Products s.r.o..

Since 14 March 2017, apt Products GmbH has had an in-house collective agreement in conjunction with a collective pay agreement with IG Metall. As part of the restructuring process (15.12.20 to 30.06.21), a reorganisation collective agreement with a term until 31.12.2023 was concluded.



## GRI 3: Material topics

### GRI 3 – 1

#### Process to determine material topics

The process for identifying material topics at apt Group involves collecting relevant concerns in the aluminium industry and monitoring and analysing competitors.

Stakeholder dialogue is currently maintained through regular personal contact with the customers and a regular dialogue with the city. The detailed feedback from the asi certification was taken on board which led to an adjustment of the material topics for the current reporting year.

A company-owned substantive materiality process is currently being developed and will be fully run and implemented for the first time in 2023 for the 2024 report.

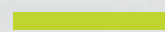
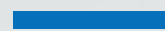
As part of the development of the transformation strategy, a comparison of these collected topics will be made in order to develop fields of action and formulate objectives in the next step. The management approach of all essential topics will emerge as a result of the transformation strategy that is still to be developed.



**GRI 3 – 2**

List of material topics



-  Material topics in the current reporting year
-  Important topics in the current reporting year

## GRI 202: Market presence

### GRI 202 – 1

#### Ratio of standard entry level salary disaggregated by gender to local statutory minimum wage

Our employees' wages and salaries are based on pay levels defined in collective bargaining agreements and therefore constitute competitive remuneration.

We also offer comprehensive additional benefits such as company pensions and discounted health insurance tariffs in Roermond (NL).

In Cheb (CZ), employees are paid in accordance with the national minimum wage, and contributions are made to their pensions.

### GRI 202 – 2

#### Proportion of senior management hired from the local community

As the largest local employer in both Monheim and Roermond, we place great importance on hiring senior management personnel from the local community. A total of 79.17 % of the senior management at apt Extrusions GmbH & Co. KG (DE) come from within a 50 km radius of the location. At apt Extrusions B.V. (NL), 83.3% of the senior management are from within a 50km radius of the location.

Roermond: 25 % of the management team > 50 km. One-way commute 75% of management team < 50 km. One-way commuting as of December 2022.

100% of the senior management of apt Products s.r.o. (CZ) and 80% of the senior management of apt Products GmbH come from within a 50 km radius of the respective plant locations.





## GRI 204: Procurement practices

Our responsibility does not end at our own company boundaries. Our supply chains also have a direct impact on the environment and society. That is why we are actively working to increase transparency in our supply chains and ensure that our suppliers also follow sustainable, socially just and biodiversity-friendly practices.

Various criteria play a role in the selection of our raw material suppliers:

- » Quality
- » Production of primary aluminium using hydropower and geothermal energy with the aim of further minimising CO<sub>2</sub>e-Emissions emissions in the manufacturing process and in our products
- » Certifications under sustainability aspects (ASI / Cradle to Cradle Certified®)

Additional aspects include:

- » Recycling secondary aluminium to produce billets at facilities near to our production sites, with the aim of lowering energy consumption and minimising journey times
- » For 2023, apt aims to procure aluminium billets from ASI Performance Standard-certified suppliers.
- » Security of supply
- » Research and development expertise in raw materials for special applications

### GRI 204 – 1

#### Proportion of spending on local suppliers

apt Extrusions GmbH & Co. KG (DE), apt Products GmbH (DE) and apt Products s.r.o. (CZ) procure 100 % of their resources from European suppliers.

apt Extrusions B.V. (NL) procures 96 % of its materials from Europe and 4 % from suppliers outside of Europe.

## GRI 301: Materials

We ensure that resources are used sustainably both inside and outside of the company through our proactive system of environmental, energy and quality management. Proactive management is a part of our continuous improvement process. Our quality pledge includes continuously improving our production processes. Multiple project teams monitor the latest energy and environmental solutions on a daily basis.

### GRI 301 – 1

#### Materials used by weight or volume

Tonnes of metal processed for on-site production in the reporting year 2022:

	2021	2022
apt Extrusions GmbH & Co. KG (DE)	42,634	39,540
apt Extrusions B.V. (NL)	27,647	27,251
apt Products GmbH (DE)	1,100	1,170
apt Products s.r.o. (CZ)	1,613	1,719
<b>apt Group total</b>	<b>72,994</b>	<b>69,680</b>

### GRI 301 – 2

#### Recycled input materials used

Percentage of input materials recycled for manufactured products:

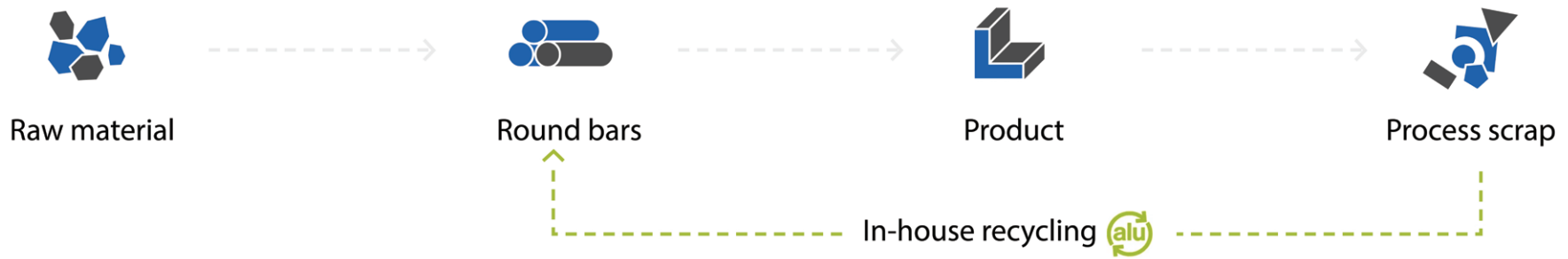
	2021	2022
apt Extrusions GmbH & Co. KG (DE)	22.78 %	45.8 %
apt Extrusions B.V. (NL)	19.69 %	56.4 %

Only materials from the apt Extrusions plants' own foundry are included in these figures. apt Products plants use profiles manufactured at apt Extrusions plants. The proportion of recycled materials used by our suppliers varies depending on availability and is not included here.

### GRI 301 – 3

#### Reclaimed products and their packaging materials

We recycle almost 100% of the extrusion process scrap produced within the apt Group in our foundry in Monheim, which can produce up to 18,000 tonnes of aluminium billets per year, which we then use to manufacture high-quality profiles.



## GRI 302: Energy

Both apt extrusion plants have an energy management system according to ISO 50001:2018. apt Products GmbH's ISO 5001:2018 energy management system was valid until the end of 2021, but was suspended as part of the course of the restructuring process. Re-certification is planned for 2023/2024.

In 2022, apt Extrusions B.V. (NL) established a dedicated Energy Management Team responsible for reviewing and evaluating enhanced energy efficiency potentials. From 2022 onwards, this team has been allocated a budget to ensure the effective and cost-efficient execution of these measures. Concurrently, the Energy Management Team at apt Extrusions GmbH & Co. KG (DE) meets on a monthly basis to optimise energy consumption on an ongoing process. It's noteworthy that both apt Products facilities maintain their own energy teams, focusing on the implementation of site-specific energy optimization initiatives. Furthermore, apt Products s.r.o. has successfully integrated a Photovoltaic (PV) system into its infrastructure.

In the future, the apt Group intends to work with a partner whose assistance will be used to develop a decarbonisation roadmap that is in line with a scenario of global warming of less than 1.5 °C.

Specific goals will be defined within the scope of the transformation strategy.



# ZERTIFIKAT



Hiermit wird bescheinigt, dass



## apt Extrusions GmbH & Co. KG

Daimlerstraße 10  
40789 Monheim  
Deutschland

ein **Energiemanagementsystem** eingeführt hat und anwendet.

Geltungsbereich:

Technische Anwendungsberatung, Herstellung, Veredelung (Oberflächenveredelung und mechanische Bearbeitung) und Vertrieb von Aluminium-Profilen

Durch ein Audit, dokumentiert in einem Bericht, wurde der Nachweis erbracht, dass das Managementsystem die Forderungen des folgenden Regelwerks erfüllt:

### ISO 50001 : 2018

Zertifikat-Registrier-Nr. 003547 EMSt18  
Gültig ab 2022-10-14  
Gültig bis 2025-10-13  
Zertifizierungsdatum 2022-09-13



DQS GmbH



Markus Bleher  
Geschäftsführer

Akkreditierte Stelle: DQS GmbH, August-Schanz-Straße 21, 60433 Frankfurt am Main  
Die Gültigkeit von diesem Zertifikat kann nur durch den QR-Code verifiziert werden.

DQS IS A MEMBER OF



BUREAU VERITAS  
Certification



Zertifikat  
für

apt Extrusions B.V.  
Industrieweg 8  
6045 JG Roermond, The Netherlands

Bureau Veritas Certification bestätigt, dass das Management-System der oben genannten Organisation beurteilt wurde und die in den folgenden Normen und Regelwerken festgelegten Anforderungen erfüllt.

Normen / Regelwerk

**DIN EN ISO 50001:2018**

Geltungsbereich

Stangpressen, Eloxieren und Liefern von Aluminium Profilen

Start Zertifizierungszyklus: **26. Oktober 2021**

Vorausgesetzt, dass während der Gültigkeitsdauer dieses Zertifikates alle Anforderungen der Normen kontinuierlich erfüllt sind, ist das Zertifikat gültig bis: **25. Oktober 2024**

Zertifikats-Nr.: **DE012448-1**

Datum: **26. Oktober 2021**



Certification Manager (A. Jol)



Adresse der Zertifizierungsstelle: Bureau Veritas Certification Germany GmbH, Veritaspark 1, 21079 Hamburg

Über die Gültigkeit dieses Zertifikates wird Bureau Veritas Certification auf Anfrage jederzeit Auskunft geben. Weitere Auskünfte über das Managementsystem und den Anwendungsbereich sind über die Organisation selbst zu bekommen.



## GRI 302: Energy

### GRI 302 – 1

#### Energy consumption within the organisation

	Reporting year 2021	2022	Change
<b>Gas consumption (kWh)</b>			
apt Extrusions GmbH & Co. KG (DE)	48,040,444	44,293,591	-7.8 %
apt Extrusions B.V. (NL)	24,549,850	23,146,209	-5.7 %
apt Products GmbH (DE)	2,669,778	1,757,589	-34.17 %
apt Products s.r.o. (CZ)	147,461	182,830	+24.0 %
<b>apt Group total</b>	<b>75,407,533</b>	<b>69,380,219</b>	<b>-8.0 %</b>

<b>Electricity consumption (kWh)</b>			
apt Extrusions GmbH & Co. KG (DE)	29,253,827	27,251,532	-6.8 %
of which: electricity mix	13,164,222	12,481,202	-5.2 %
electricity from renewable sources	16,089,605	14,770,330	-8.2 %
apt Extrusions B.V. (NL)	15,064,213	13,324,965	-11.5 %
of which: electricity mix	13,064,222	13,324,965	-11.5 %
electricity from renewable sources	–	–	–
apt Products GmbH (DE)	2,411,720	1,685,752	-30.1 %
of which: electricity mix	1,131,097	1,368,830	+21.0 %
electricity from renewable sources	1,280,623	316,922	-75.3 %
apt Products s.r.o. (CZ)	3,352,240	3,676,300	+9.7 %
of which: electricity mix	3,209,099	3,525,750	+9.9 %
electricity from renewable sources	143,141	150,550	+5.2 %
<b>apt Group total</b>	<b>50,082,000</b>	<b>45,938,549</b>	<b>-8.27%</b>

## GRI 302 – 3

## Energy Intensity

	Reporting year 2021	2022	Change
<b>Gas intensity (kWh/to)</b>			
apt Extrusions GmbH & Co. KG (DE)	1,127	1,120	-0.6 %
apt Extrusions B.V. (NL)*	888	849	-4.4 %
apt Products GmbH (DE)**	-	-	-
apt Products s.r.o. (CZ)**	-	-	-

<b>Electricity consumption (kWh/to)</b>			
apt Extrusions GmbH & Co. KG (DE)	686	689	+0.4 %
apt Extrusions B.V. (NL)*	545	489	-10.3 %
apt Products GmbH (DE)**	-	-	-
apt Products s.r.o. (CZ)**	-	-	-

\* Per tonne is calculated per extruded tonne and not on billed tonnes.

\*\* The apt Products plants are located at a different level of value creation, which is why the energy intensity is not calculated for them..

## GRI 303: Water and Effluents

At all apt Extrusion and apt Products plants we have introduced an environmental management system in accordance with ISO 14001: 2015, which covers water and effluents

### GRI 303 – 1

#### Interactions with water as a shared resource

Water is primarily used in the filter press as well as in the surface treatment and powder coating due to the nature of these processes.

### GRI 303 – 3, 4 und 5

#### Water withdrawal, water discharge, water consumption

	Reporting year 2021	2022	Change
<b>Water withdrawal (m<sup>3</sup>)</b>			
apt Extrusions GmbH & Co. KG (DE)	243,632	183,228	-24.8 %
apt Extrusions B.V. (NL)	180,775	161,275	-10.8 %
apt Products GmbH (DE)	10,024	2,579	-74.3 %
apt Products s.r.o. (CZ)	2,556	2,976	+16.4 %
<b>apt Group total</b>	<b>436,987</b>	<b>350,058</b>	<b>-19.9 %</b>
<b>Waster discharge (m<sup>3</sup>)</b>			
apt Extrusions GmbH & Co. KG (DE)	188,927	152,560	-19.2 %
apt Extrusions B.V. (NL)	117,113	223,809	+91.1 %
apt Products GmbH (DE)	–	–	–
apt Products s.r.o. (CZ)	2,691	3,135	+16.5 %
<b>apt Group total</b>	<b>306,146</b>	<b>378,496</b>	<b>+23.6 %</b>
<b>Industrial water consumption (m<sup>3</sup>)</b>			
apt Extrusions GmbH & Co. KG (DE)	48,835	39,101	-19.9 %
apt Extrusions B.V. (NL)	45,141	13,300	-70.5 %
apt Products GmbH (DE)	–	–	–
apt Products s.r.o. (CZ)	–	–	–
<b>apt Group total</b>	<b>93,976</b>	<b>52,401</b>	<b>-44.2 %</b>
<b>Drinking water consumption (m<sup>3</sup>)</b>			
apt Extrusions GmbH & Co. KG (DE)	5,870	3,865	-34.2 %
apt Extrusions B.V. (NL)	21,311	15,196	-28.7 %
apt Products GmbH (DE)	–	–	–
apt Products s.r.o. (CZ)	–	–	–
<b>apt Group total</b>	<b>27,181</b>	<b>19,061</b>	<b>-29.9 %</b>





## GRI 304: Biodiversity

Biodiversity assessments were commissioned for both extrusion plant sites. In the next step, measures will be defined from the results of these reports.

All indicators of GRI 304: Biodiversity 2015 are part of the report Biodiversity Risk Analysis for apt Extrusions, Monheim (DE), as well as the report Biodiversity Risk Analysis for apt Extrusions, Roermond (NL) - prepared by Pulswerk GmbH, dated 16.11.2021.

→ See page. 16

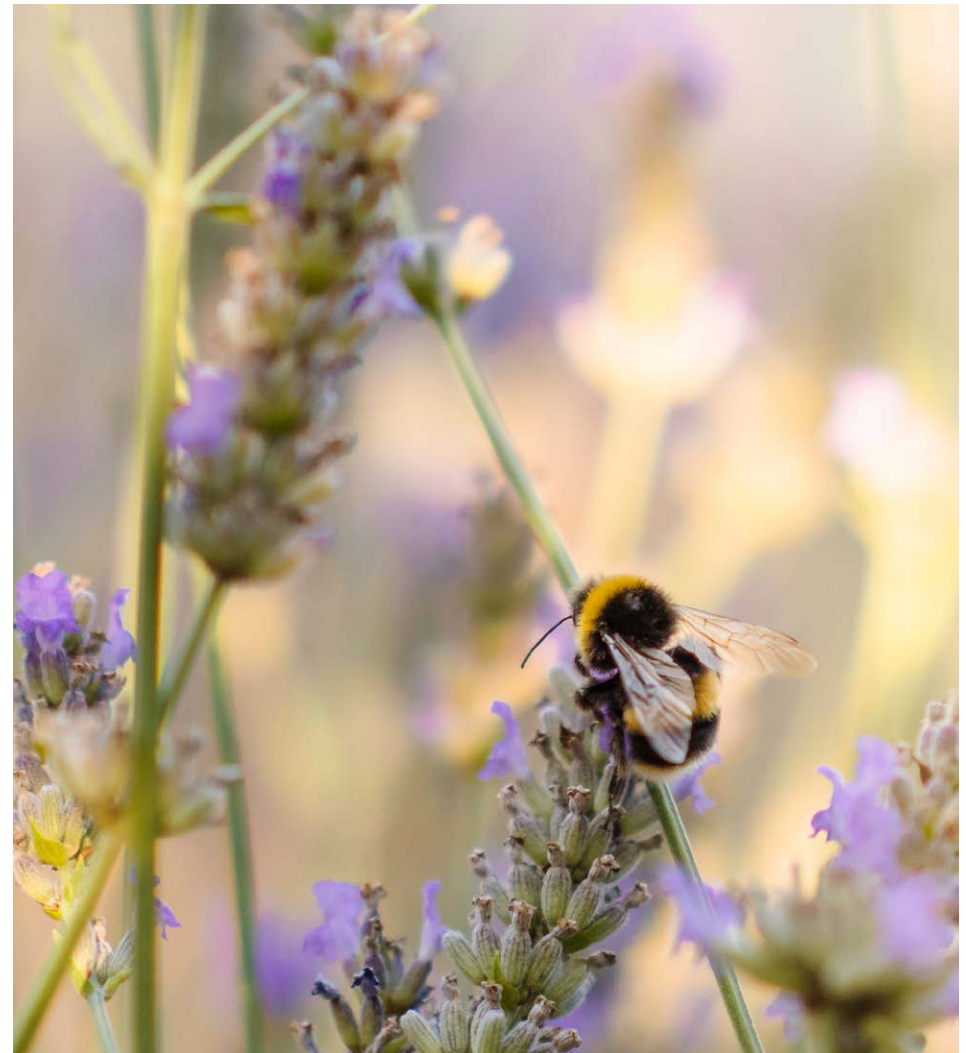
### GRI 304 – 1

#### **Operational sites owned, leased, managed in, or adjacent to, protected areas and areas of high biodiversity value outside protected areas**

apt Extrusions GmbH & Co. KG and apt Extrusions B.V. are not located in any protected areas.

In the reporting year 2022, there was a plant malfunction at the apt Extrusions GmbH & Co. KG in Monheim, which led to a reportable release of legionella pursuant to the 42nd BImSchV.

There were no releases or leaks at the sites at apt Extrusions B.V. (NL) in Roermond, apt Products GmbH (DE) in Eckental and apt Products s.r.o. (CZ) in Cheb - Dolní Dvory.



# GRI 305: Emissions

The apt Group's carbon footprint was calculated and certified in accordance with the GHG Protocol Corporate Standard: 2004 for the year 2021. The calculation includes Scope 1 to 3 of apt Holding and the Extrusion Plants in Monheim and Roermond. The carbon footprints of the two apt Products plants have not yet been calculated.

The Düsseldorf district government regularly checks apt Extrusions GmbH & Co. KG to determine which emissions are released into the air in addition to CO<sub>2</sub>. As these are below the legal requirements, apt in Monheim is exempt from an annual emissions measurement.

## GRI 305 – 1, 2, 3, 4 und 5

- Direct GHG emissions (Scope 1)
- Indirect energy-related GHG emissions (Scope 2)
- Other indirect GHG emissions (Scope 3)
- Intensity of GHG emissions
- Reduction of the GHG emissions



	Reporting year 2021	2022	Change
<b>Greenhouse gas emissions, Scope 1, t CO<sub>2</sub>e</b>			
apt Extrusions GmbH & Co. KG (DE)	9,802	8,039	-17.9 %
apt Extrusions B.V. (NL)	5,517	4,953	-10.2 %
<b>Greenhouse gas emissions, Scope 2, t CO<sub>2</sub>e</b>			
apt Extrusions GmbH & Co. KG (DE)	7,082	5,962	-15.8 %
apt Extrusions B.V. (NL)*	3,125	8,039	+157.2 %
<b>Greenhouse gas emissions, Scope 3, t CO<sub>2</sub>e</b>			
apt Extrusions GmbH & Co. KG (DE)	222,758	177,495	-20.3 %
apt Extrusions B.V. (NL)	153,223	126,817	-17.2 %
<b>Greenhouse gas emissions, t CO<sub>2</sub>e / t Al, Scope 1</b>			
apt Extrusions GmbH & Co. KG (DE)	0.23	0.20	-13.0 %
apt Extrusions B.V. (NL)	0.20	0.18	-10.0 %
<b>Greenhouse gas emissions, t CO<sub>2</sub>e / t Al, Scope 2</b>			
apt Extrusions GmbH & Co. KG (DE)	0.17	0.15	-11.8 %
apt Extrusions B.V. (NL)	0.11	0.29	+163.6 %
<b>Greenhouse gas emissions, t CO<sub>2</sub>e / t Al, Scope 3</b>			
apt Extrusions GmbH & Co. KG (DE)	5.22	4.49	-14.0%
apt Extrusions B.V. (NL)	5.57	4.65	-16.5 %

inc. 10 % addition

**GRI 305 – 6****Emissions of ozone depleting substances (ODS)**

We currently have no data on emissions of ozone depleting substances (ODS). As our stakeholders express a legitimate interest in this data, we are currently looking into a detailed collection and publication.

**GRI 305 – 7****Nitrogen oxides (NOx), sulphur oxides (SOx) and other significant air emissions**

Our current data show that air emissions are below the established limits above which regular monitoring is required for nitrogen oxides (NOX), sulphur oxides (SOX) and other significant air emissions. As a result, apt Holding does not currently consider these emissions to be significant and has therefore not published any corresponding data to date.

Nevertheless, we recognise the legitimate interest of our stakeholders in this information. Therefore, we are currently evaluating the possibility of a detailed recording and future publication of air emissions.

## GRI 306: Waste water and waste

All locations have an ISO 14001:2015 environmental management system that covers waste management

### GRI 306 – 1

#### Waste generation and significant waste-related impacts

We recycle almost 100% of the extrusion process scrap within the apt Group at our foundry in Monheim. By turning process scrap into aluminium billets at our in-house foundry and feeding these secondary materials back into the manufacturing process, we can reuse up to 18,000 tonnes of aluminium every year. Aluminium can be recycled time and again without any loss of quality using a process that only requires around 5% of the energy needed to manufacture primary aluminium. Even residual materials from the foundry or the water used in the anodising systems are recycled.

### GRI 306 – 3, 4 und 5

#### Waste generated, waste diverted from disposal, waste directed to disposal

All waste given for disposal is disposed of by certified companies.

	apt Extrusions GmbH & Co. KG (DE)		apt Extrusions B.V. (NL)		apt Products GmbH (DE)		apt Products s.r.o. (CZ)		apt Group total	
	2021	2022	2021	2022	2021	2022	2021	2022	2021	2022
<b>Total waste (t)</b>	<b>8,749.21</b>	<b>7,938.97</b>	<b>3,239.14</b>	<b>3,093.59</b>	<b>596</b>	<b>329</b>	<b>162.74</b>	<b>216.99</b>	<b>12,747.09</b>	<b>11,578.55</b>
<b>Non-hazardous waste (t)</b>	<b>2,964.36</b>	<b>3,340.67</b>	<b>2,182.44</b>	<b>3,070.42</b>	<b>415</b>	<b>323</b>	<b>46.99</b>	<b>62.97</b>	<b>5,608.79</b>	<b>6,797.06</b>
of which: Waste diverted to recycling (t)	1,363.72	1,647.63	2,182.44	3,070.42	349	273	19.93	19.97	3,915.09	5,011.02
Waste directed to disposal (t)	1,600.64	1,693.04	–	–	66	50	27.06	43.90	1,693.70	1,786.94
<b>Hazardous waste (t)</b>	<b>5,784.85</b>	<b>4,598.30</b>	<b>1,056.71</b>	<b>23.17</b>	<b>181</b>	<b>6</b>	<b>115.74</b>	<b>154.02</b>	<b>7,138.30</b>	<b>4,781.49</b>
of which: Waste diverted to recycling (t)	5,636.20	4,466.21	1,032.40	22.63	33.60	–	–	–	6,702.20	4,488.84
Waste directed to disposal (t)	148.65	132.09	24.31	0.54	147.40	6	115.74	154.02	436.10	292.65

## GRI 308: Supplier environmental assessment

Already today, all our suppliers must meet quality and environmental criteria in order to work with the apt Group. These include criteria such as those presented in Procurement Practices GRI 204. An implementation in Monheim has taken place. Implementation in Roermond is planned for year 23. The management approach will be defined on this basis.

→ See page 12 and 13

### GRI 308 – 1

#### New suppliers that were screened using environmental criteria

All new strategic suppliers of core materials required for our manufacturing operations were assessed according to quality and environmental criteria in 2022. The prerequisite for purchasing from the apt Group is currently certification in accordance with the ISO 9001 quality management standard, which means that some environmental criteria are already covered. apt Products s.r.o. screens all suppliers for the ISO 14001 certification. All major suppliers are ISO 14001 certified.

### GRI 308 – 2

#### Negative environmental impacts in the supply chain and actions taken

There are no known negative environmental impacts in the supply chain.

## GRI 401: Employment

An internal audit based on the SA8000 international standard was carried out at the apt Extrusions plants for the first time in 2021, with the aim of improving working conditions for employees. The findings of the audit, and the measures derived from it, are currently being transposed into a management approach.

### GRI 401 – 1

#### New employee hires and employee turnover

	apt Extrusions GmbH & Co. KG (DE)		apt Extrusions B.V. (NL)		apt Products GmbH (DE)		apt Products s.r.o. (CZ)		apt Group total	
	2021	2022	2021	2022	2021	2022	2021	2022	2021	2022
New hires	20	40	21	30	5	16	23	28	69	114
Employees who have left the company	21	22	19	34	35	4	30	26	105	86
<b>Change</b>	<b>-1</b>	<b>+18</b>	<b>+2</b>	<b>-4</b>	<b>-30</b>	<b>+12</b>	<b>-7</b>	<b>+2</b>	<b>-36</b>	<b>+28</b>

### GRI 401 – 3

#### Parental leave

	apt Extrusions GmbH & Co. KG (DE)		apt Extrusions B.V. (NL)		apt Products GmbH (DE)		apt Products s.r.o. (CZ)		apt Group total	
	2021	2022	2021	2022	2021	2022	2021	2022	2021	2022
Employees (F) on parental leave	2	1	–	–	3	3	3	4	8	8
Employees (M) on parental leave	5	7	4	–	1	1	–	–	10	8
<b>Total</b>	<b>+7</b>	<b>+8</b>	<b>+4</b>	<b>0</b>	<b>+4</b>	<b>+4</b>	<b>+3</b>	<b>+4</b>	<b>+18</b>	<b>+16</b>

## GRI 402: Labor/management relations

### GRI 402 – 1

#### Minimum notice periods regarding operational changes

The statutory notice periods are adhered to at all locations.

Our business is all about people, our most valuable resource. We support our employees, as we recognise and understand that they are the key to our success.

This belief is ingrained in our corporate values and put into practice by our staff every day.

Make a career with apt | apt Group ([apt-alu-products.com](https://apt-alu-products.com))



## GRI 403: Occupational health and safety

All apt Extrusions and apt Products plants have an external occupational health and safety officer, who provides support and guidance on health and safety issues. This person prepares an annual report for the management.

### GRI 403 – 1

#### Occupational health and safety management system

As part of the ASI certification in accordance with the Aluminium Stewardship Performance Standard, both apt Extrusions GmbH & Co. KG (DE) and apt Extrusions B.V. (NL) have implemented management systems that are based on the ISO 45001 standard but do not have external certification.

### GRI 403 – 2

#### Hazard identification, risk assessment and incident investigation

Occupational risks and hazards are outlined in the occupational health and safety report.

##### apt Extrusions GmbH & Co. KG (DE)

Planning and specific measures for the year 2023

1. Conduct the 4 ASA meetings, in which current topics of occupational health and safety are discussed and various measures are initiated.
2. Conduct 18 DGUV meetings to discuss current occupational health and safety concerns and, if necessary, initiate various measures.
3. Reduce the number of reportable workplace accidents through 30 inspections. These inspections are to be led by the safety expert, with participation from managers in both the production and administration departments. This approach aims to strengthen workplace health and safety

by proactively identifying and addressing potential issues.

4. Carrying out accident analyses for all reportable occupational accidents, including those of temporary workers, under the direction of HR. The participants for the accident analyses are: HR, safety specialist, manager from the department and, if possible, the person who had the accident. The accident analyses are carried out with regard to technical causes and possible reasons for any misconduct on the part of the accident victim
5. Communicate the results of the accident analyses on the intranet and on the information boards.
6. Ergonomic assessment of the exposed workplaces that are still open.

##### apt Extrusions B.V. (NL)

Planning and specific measures for the year 2023

1. Reduce injuries, especially cuts, by at least 20%. To achieve this, personal protective equipment (PPE) available on the market is first analysed. Furthermore, at OVB, cut-resistant sleeves, which are mandatory when stripping profiles are provided.
2. Better monitoring of the PSA policy, including through proactive action and proactive reporting of unsafe situations.
3. Inform and educate workers about this policy by presenting the company video, explaining the general PPE policy, toolbox and checklists.

##### apt Products GmbH (DE)

The overriding goals for 2023 are to reduce the number of reported workplace accidents through measures such as regular inspections, carrying out risk assessments and ergonomic evaluation of exposed workplaces. In three ASA meetings, the current topics of occupational health and safety are discussed, including a discussion over any recent accidents, and brainstorm ways to stop them from happening again in the future.

### apt Products s.r.o. (CZ)

Each accident is investigated individually and individual measures are taken to prevent further accidents of a similar nature from recurring.

#### GRI 403 – 3

#### Occupational health services

apt Extrusions B.V. (NL) has an in-house occupational health service that provides regular check-ups and vaccinations. The Monheim location has a similar service that performs all mandatory and optional check-ups, suitability, tests and pre-employment medical examinations defined in the German Ordinance on Preventive Occupational Health Care (ArbMedVV). The occupational health service at Monheim also attends regular occupational health and safety meetings.

#### GRI 403 – 5

#### Worker training on occupational health and safety

Training for employees on the topic of occupational safety and health protection is offered once a year as a mandatory event. These classroom training sessions are available to all employees. In 2022, 100 % of the employees at all locations participated in these training courses.

#### GRI 403 – 6

#### Promotion of worker health

In Roermond, apt contributes to the monthly costs for a fitness studio. apt Extrusions in Monheim organises and finances weekly running training with a professional fitness coach. Here, the apt teams can also prepare for their participation in the annual Monheim Gänseliesellauf. apt Extrusions in Monheim offers to lease bicycles or pedelecs as company bicycles and provide them to employees for use. The same initiative is also available at apt in Roermond where it is called "FiscFree".

In Monheim, the focus in 2022 was on improving ergonomics in plant 2 by installing electrically adjustable lifting tables in the sawmill and packaging, as well as lifting tables, tilting equipment and other technical measures at the die-cutter. The working conditions were also improved by installing an extraction system on the P 35 press to capture aerosols and dust. To make it easier for the employees to secure themselves against falling, the lift truck of the anodising plant was equipped with a rail system. There was also a replacement of the supplier for work clothing.



**GRI 403 – 8**
**Employees covered by an occupational health and safety management system**

At the apt extrusion plants, 100 % of the employees are covered by the management system based on ISO 45001.

**GRI 403 – 9**
**Work-related injuries**

	apt Extrusions GmbH & Co. KG (DE)		apt Extrusions B.V. (NL)		apt Products GmbH (DE)		apt Products s.r.o. (CZ)		apt Group total	
	2021	2022	2021	2022	2021	2022	2021	2022	2021	2022
Number of deaths due to work-related injuries	0	0	0	0	0	0	0	0	0	0
Number of work-related injuries with severe consequences	0	0	1	6	0	0	0	0	1	6
Number of documentable work-related injuries	94	93	31	35	5	2	8	2	138	132
Most important types of work-related injuries	Bruising/crushing Cuts and grazes Burns	Bruising/crushing Cuts and grazes	Cuts and grazes	Lacerations	Bruising/crushing Cuts and grazes	Quetschungen Burns	Bruising/crushing Cuts and grazes	Bruising/crushing Cuts and grazes		
Number of hours worked	442,741 Hours	441,113 Hours	229,007 Hours	268,168 Hours	148,695 Hours	110,220 Hours	400,582 Hours	463,364 Hours	1,221,025 Hours	1,282,865 Hours
Measures taken	–	specific	specific	–	–	–	–	–	–	–

## GRI 404: Training and education

We apply our employee qualification process to all apt Group locations and also offer an attractive range of benefits.

We offer attractive benefit packages for our employees. Because they want to develop further - we offer them opportunities to do so through apprenticeships, personal development plans, a special programme to promote young talent, language courses and internal training. An annual budget is available for training measures. Supervisors can register needs in their annual staff development planning, which can then be acted on.

### GRI 404 – 2

#### Programs for upgrading employee skills and transition assistance programs

The team members at apt Products GmbH who were impacted by the job cuts due to some financial challenges have been offered a chance to join a transition company. Here, they'll get the support and training they need for their next career steps.

### GRI 404 – 3

#### Percentage of employees receiving regular performance and career development reviews

All of our employees receive annual performance reviews. 100% of our employees were fully conducted in 2022.

## GRI 405: Diversity and Equal Opportunity

### GRI 405 – 1

#### Diversity of governance bodies and employees

Breakdown of governance bodies and management personnel									
	apt Extrusions GmbH & Co. KG (DE)		apt Extrusions B.V. (NL)		apt Products GmbH (DE)		apt Products s.r.o. (CZ)		
	2021	2022	2021	2022	2021	2022	2021	2022	
<b>By gender</b>									
Female	20.00 %	18.19 %	16.60 %	12.50 %	0.00 %	0.00 %	16.60 %	16.60 %	
Male	80.00 %	81.81 %	83.40 %	87.50 %	100 %	100 %	83.40 %	83.40 %	
<b>By age group</b>									
under 30	0.00 %	0.00 %	0.00 %	6.25 %	20.00 %	0.00 %	0.00 %	0.00 %	
30 - 50	2.00 %	27.27 %	38.90 %	37.50 %	20.00 %	50.00 %	83.40 %	83.40 %	
over 50	80.00 %	72.73 %	61.10 %	56.25 %	60 %	50.00 %	16.6 %	16.60 %	

## GRI 406: Non-discrimination

### GRI 406 – 1

#### Incidents of discrimination and corrective actions taken

Incidents of discrimination									
	apt Extrusions GmbH & Co. KG (DE)		apt Extrusions B.V. (NL)		apt Products GmbH (DE)		apt Products s.r.o. (CZ)		
	2021	2022	2021	2022	2021	2022	2021	2022	
Total number of incidents of discrimination in the reporting period	0	0	0	0	0	0	0	0	
Status of the incidents	–	–	–	–	–	–	–	–	

## GRI 407: Freedom of association and collective bargaining

All locations have a works council.

The works council at apt Extrusions GmbH & Co. KG (DE) has nine members. Meetings take place weekly. The works council addresses the following topic:

- » Conclusion of company agreements
- » Approval of additional work
- » Approval/discussion of recruitment, transfers, redeployment

The works council at apt Extrusions B.V. (NL) has four members. It meets with the management four times per year and publishes its meeting minutes. Employees are released from their work duties for works council affairs.

The works council of apt Products GmbH consisted of five people since May 2021. It meets weekly and has meetings with the management every month. Its activities are focused on the following:

- » Conclusion of company agreements
- » Approval of additional work
- » Approval/discussion of recruitment, transfers, redeployment

The representatives of the apt Products s.r.o. works council meet once per quarter and on an ad hoc basis. All employees have the opportunity to submit ideas, suggestions or comments through the works council representatives. Minutes of all works council meetings are taken and published.

### GRI 407 – 1

**Operations and suppliers in which the right to freedom of association and collective bargaining may be at risk**

The right to freedom of association and collective bargaining is not at risk at apt Extrusions GmbH & Co. KG (DE) or apt Extrusions B.V. (NL).

A review of suppliers in this respect has not yet taken place, but will be considered in the course of the introduction of Ecovadis.

## GRI 409: Forced or compulsory labor

### GRI 409 – 1

**Operations and suppliers at significant risk for incidents of forced or compulsory labor**

The four apt Group plants, do everything possible to prevent modern slavery. A management system according to SA8000 (not certified) is available, and is planned to be implemented next year.

The group-wide supplier code of conduct introduced in 2022 prohibits all forced and child labour. The introduction of Ecovadis helps to ensure that the code of conduct is complied with. In addition, we intend to publish a comprehensive statement on modern slavery annually in the Sustainability Report. In it, we report on details of our measures against modern slavery and forced labour as well as risk assessments.

## GRI 414: Supplier social assessment

The introduction of the Ecovadis assessment system at apt Extrusions GmbH & Co. KG has taken place. An introduction at the other sites is planned for 2023.

### GRI 414 – 1

#### New suppliers that were screened using social criteria

All new suppliers in 2022 were screened according to quality and environmental criteria. The evaluation from a social point of view has been carried out at apt Extrusions GmbH & Co. KG since 2022 via Ecovadis. Following a successful introduction, the screening system will be expanded to the entire apt Group.

## GRI 415: Public policy

### GRI 415 – 1

#### Political contributions

No political contributions were made in the reporting period.

## GRI 418: Customer Privacy

### GRI 418 – 1

#### Substantiated complaints concerning breaches of customer privacy and losses of customer data

There were no known complaints concerning breaches of customer privacy or losses of customer data in the reporting period.

apt Holding GmbH ensures compliance with the General Data Protection Regulation (DSGVO) at all its locations.

Dr Jörn Voßbein, UIMC DR. VOSSBEIN GmbH & Co KG, is the external data protection officer for apt Extrusions GmbH & Co. KG, apt Products GmbH and apt Holding GmbH. The apt Group website's privacy policy includes a link through which the data protection officer can be contacted directly.

A third party has been commissioned to provide assistance in GDPR-related issues at apt Extrusions B.V. (NL). This third party fulfils the function of a data protection and data security officer and carries out four audits per year. Processes and policies are updated as and when necessary.

apt Products s.r.o. (CZ) complies with the GDPR and the corresponding legal requirements.

# GRI Content Index 2022

Statement of use		The Extrusion and Products plants of the apt Group have reported in accordance with the GRI standards for the period 01.01.2022 to 31.12.2022.			
GRI Standard		GRI 1: Foundation 2021			
Applicable GRI Sector Standard(s)		No Sector Standards applied			
			Omission		
GRI Standard	Disclosure	Location	Requirement(s) omitted	Reason	Explanation
<b>GENERAL DISCLOSURES</b>					
GRI 2: General disclosures 2021	2-1 Organisational Details	p. 6 et seq.			
	2-2 Entities included in the organization's sustainability reporting	p. 8 et seq.			
	2-3 Reporting period, frequency and contact point	p. 22			
	2-4 Restatements of information	p. 22			
	2-5 External assurance	p. 22			
	2-6 Activities, value chain and other business relationships	p. 23 et seq.			
	2-7 Employees	p. 25			
	2-8 Workers who are not employees		X	Information not available/incomplete	
	2-9 Governance structure and composition	p. 25			
	2-10 Nomination and selection of the highest governance body		X	Information not available/incomplete	
	2-11 Chair of the highest governance body	p. 26			
	2-12 Role of the highest governance body in overseeing the management of impacts	p. 26			
	2-13 Delegation of responsibility for managing impacts		X	Information not available/incomplete	The process and thus the area of responsibility for managing impacts is derived from the strategy, which is currently being developed.
	2-14 Role of the highest governance body in sustainability reporting	p. 26			
	2-15 Conflicts of interest		X	Information not available/incomplete	The process and thus possible conflicts arise from the strategy, which is currently being developed.
	2-16 Communication of critical concerns	p. 26			
	2-17 Collective knowledge of the highest governance body	p. 26			
	2-18 Evaluation of the performance of the highest governance body		X	Information not available/incomplete	The process for evaluation stems from the strategy, which is currently being drafted.
	2-19 Remuneration policies		X	Confidentiality constraints	

GRI 2: General Disclosures 2021	2-20 Process to determine remuneration		X	Confidentiality constraints	
	2-21 Annual total compensation ratio		X	Confidentiality constraints	
	2-22 Statement on sustainable development strategy	p. 4f			
	2-23 Policy commitments	apt Group corporate policy available for download at <a href="https://www.apt-alu-products.com/downloads/zertifikate-datenblaetter/">https://www.apt-alu-products.com/downloads/zertifikate-datenblaetter/</a>			
	2-24 Embedding policy commitments		X	Not applicable	There is no official commitment to internationally valid policies.
	2-25 Processes to remediate negative impacts		X	Information not available/incomplete	
	2-26 Mechanisms for seeking advice and raising concerns	p. 26			
	2-27 Compliance with laws and regulations	p. 27			
	2-28 Membership associations	p. 27			
	2-29 Approach to stakeholder engagement	p. 28			
2-30 Collective bargaining agreements	p. 29				
<b>MATERIAL TOPICS</b>					
GRI 3: Material Topics 2021	3-1 Process to determine material topics	p. 30			
	3-2 List of material topics	p. 31			
<b>ECONOMIC PERFORMANCE</b>					
GRI 3: Material Topics 2021	3-3 Management of material topics	p. 19 & Annual and Management Report published in the Federal Gazette			
GRI 201: Economic Performance 2016	201-1 Direct economic value generated and distributed	Annual and Management Report published in the Federal Gazette			
	201-2 Financial implications and other risks and opportunities due to climate change		X	Information not available/incomplete	The process for identifying potential and actual financial risks and opportunities from climate change is being developed within the framework of the strategy, which is currently being drafted.
	201-3 Defined benefit plan obligations and other retirement plans		X	Confidentiality constraints	
	201-4 Financial assistance received from government	apt Holding GmbH has not received any financial support.			
<b>MARKET PRESENCE</b>					
GRI 3: Material Topics 2021	3-3 Management of material topics		X	Information not available/incomplete	The management approach of all Essential Topics will emerge as a result of the transformation strategy yet to be developed.
GRI 202: Market Presence 2016	202-1 Ratios of standard entry level wage by gender compared to local minimum wage	p. 32			
	202-2 Proportion of senior management hired from the local community	p. 32			
<b>INDIRECT ECONOMIC IMPACTS</b>					

GRI 3: Material Topics 2021	3-3 Management of material topics		X	Information not available/incomplete	
GRI 203: Indirect Economic Impacts 2016	203-1 Infrastructure investments and services supported		X	Not applicable	Not defined as material
	203-2 Significant indirect economic impacts		X	Not applicable	Not defined as material
<b>PROCUREMENT PRACTICES</b>					
GRI 3: Material Topics 2021	3-3 Management of material topics	p. 4 et seq.; p. 14 et seq.; p. 33			
GRI 204: Procurement Practices 2016	204-1 Proportion of spending on local suppliers	p. 33			
<b>ANTI-CORRUPTION</b>					
GRI 3: Material Topics 2021	3-3 Management of material topics		X	Information not available/incomplete	
GRI 205: Anti-corruption 2016	205-1 Operations assessed for risks related to corruption		X	Not applicable	Not defined as material
	205-2 Communication and training about anti-corruption policies and procedures		X	Not applicable	Not defined as material
	205-3 Confirmed incidents of corruption and measures taken		X	Not applicable	Not defined as material
<b>ANTI-COMPETITIVE BEHAVIOUR</b>					
GRI 3: Material Topics 2021	3-3 Management of material topics		X	Information not available/incomplete	
GRI 206: Anti-competitive Behaviour 2016	206-1 Legal actions for anti-competitive behavior, anti-trust, and monopoly practices	In the reporting period, there are no legal proceedings due to anti-competitive behaviour			
<b>STEUERN</b>					
GRI 3: Material Topics 2021	3-3 Management of material topics		X	Not applicable	Wird nicht als wesentlich definiert, da die apt Group sich an alle gesetzlichen und steuerrechtlichen Vorgaben des jeweiligen lokalen Steuerrechts hält.
GRI 207: Tax 2019	207-1 Approach to Tax		X	Not applicable	Not defined as material
	207-2 Tax governance, control and risk management		X	Not applicable	Not defined as material
	207-3 Stakeholder engagement and management of concerns related to tax		X	Not applicable	Not defined as material
	207-4 Country-by-country reporting		X	Not applicable	Not defined as material
<b>MATERIALIEN</b>					
GRI 3: Material Topics 2021	3-3 Management of material topics	p. 34			
GRI 301: GRI 301: Materials 2016	301-1 Materials used by weight or volume	p. 34			
	301-2 Recycled input materials used	p. 34			
	301-3 Reclaimed products and their packaging materials	p. 34			
<b>ENERGIE</b>					
GRI 3: Material Topics 2021	3-3 Management of material topics	p. 36 et seq.			
GRI 302: (Energy) 2016	302-1 Energy consumption within the organisation	p. 38			
	302-2 Energy consumption outside of the organisation		X	Information not available/incomplete	
	302-3 Energy intensity	p. 39			
	302-4 Reduction of energy consumption	p. 38			
	302-5 Reductions in energy requirements of products and services		X	Confidentiality constraints	
<b>WATER AND EFFLUENTS</b>					
GRI 3: Material Topics 2021	3-3 Management of material topics	p. 40			
Wasser Water and Effluents 2018	303-1 Interactions with water as a shared resource	p. 40			
	303-2 Management of water discharge-related impacts	p. 40			
	303-3 Water withdrawal	p. 40			
	303-4 Water discharge	p. 40			
	303-5 Water consumption	p. 40			



BIODIVERSITÄT						
GRI 3: Material Topics 2021	3-3 Management of material topics	p. 18				
GRI 304: Biodiversity 2016	304-1 Operational sites owned, leased, managed in, or adjacent to, protected areas and areas of high biodiversity value outside protected areas	p. 41				
	304-2 Significant impacts of activities, products and services on biodiversity	None known				
	304-3 Habitats protected or restored	None				
	304-4 IUCN Red List species and national conservation list species with habitats in areas affected by operations	None known				
EMISSIONS						
GRI 3: Material Topics 2021	3-3 Management of material topics	p. 42				
GRI 305: Emissions 2016	305-1 Direct (Scope 1) GHG emissions	p. 42				
	305-2 Energy indirect (Scope 2) GHG emissions	p. 42				
	305-3 Other indirect (Scope 3) GHG emissions	p. 42				
	305-4 GHG emissions intensity	p. 42				
	305-5 Reduction of GHG Emissions	p. 42				
	305-6 Emissions of ozone-depleting substances (ODS)	p. 43				
	305-7 Nitrogen oxides (NOx), sulfur oxides (SOx), and other significant air emissions	p. 43				
WASTE						
GRI 3: Material Topics 2021	3-3 Management of material topics	p. 44				
GRI 306: Waste 2020	306-1 Waste generation and significant waste-related impacts	p. 44				
	306-2 Management of significant waste-related impacts		X	Information not available/incomplete		
	306-3 Waste generated	p. 44				
	306-4 Waste diverted from disposal	p. 44				
	306-5 Waste directed to disposal	p. 44				
SUPPLIER ENVIRONMENTAL ASSESSMENT						
GRI 3: Material Topics 2021	3-3 Management of material topics	p. 45				
GRI 308: Supplier Environmental Assessment 2016	308-1 New suppliers that were screened using environmental criteria	p. 45				
	308-2 Negative environmental impacts in the supply chain and actions taken	p. 45				
EMPLOYMENT						
GRI 3: Material Topics 2021	3-3 Management of material topics	p. 45.				
GRI 401: Employment 2016	401-1 New employee hires and employee turnover	p. 45				
	401-2 Benefits provided to full-time employees that are not provided to temporary or part-time employees		X	Information not available/incomplete		
	401-3 Parental leave	p. 45				
LABOR/MANAGEMENT RELATIONS						
GRI 3: Material Topics 2021	3-3 Management of material topics	p. 46				
GRI 402: Labor Management Relations 2016	402-1 Minimum notice periods regarding operational changes	p. 46				

OCCUPATIONAL HEALTH AND SAFETY						
GRI 3: Material Topics 2021	3-3 Management of material topics	p. 17 p. 47 et seq.				
GRI 403: Occupational Health and Safety 2018	403-1 Occupational health and safety management system	p. 47				
	403-2 Hazard identification, risk assessment, and incident investigation	p. 47 et seq.				
	403-3 Occupational health services	p. 48				
	403-4 Worker participation, consultation, and communication on occupational health and safety			X	Information not available/incomplete	
	403-5 Worker training on occupational health and safety	p. 48				
	403-6 Promotion of worker health	p. 48				
	403-7 Prevention and mitigation of occupational health and safety impacts directly linked by business relationships			X	Information not available/incomplete	
	403-8 Workers covered by an occupational health and safety management system	p. 49				
	403-9 Work-related injuries	p. 49				
	403-10 Work-related ill health			X	Information not available/incomplete	Auf Grund von Datenschutzbestimmungen
TRAINING AND EDUCATION						
GRI 3: Material Topics 2021	3-3 Management of material topics	p. 50				
GRI 404: Training and Education 2016	404-1 Average hours of training per year per employee			X	Information not available/incomplete	
	404-2 Programs for upgrading employee skills and transition assistance programs	p. 50				
	404-3 Percentage of employees receiving regular performance and career development reviews	p. 50				
DIVERSITY AND EQUAL OPPORTUNITY						
GRI 3: Material Topics 2021	3-3 Management of material topics	p. 51				Der Managementansatz aller Wesentlichen Themen wird als Ergebnis aus der noch zu erarbeitenden Transformationsstrategie hervorgehen.
GRI 405: Diversity and Equal Opportunity 2016	405-1 Diversity of governance bodies and employees	p. 51				
	405-2 Ratio of basic salary and remuneration of women to men			X	Information not available/incomplete	
NON-DISCRIMINATION						
GRI 3: Material Topics 2021	3-3 Management of material topics	p. 51				
GRI 406: Non-discrimination 2016	406-1 Incidents of discrimination and corrective actions taken	p. 51				
FREEDOM OF ASSOCIATION AND COLLECTIVE BARGAINING						
GRI 3: Material Topics 2021	3-3 Management of material topics	p. 52				
GRI 407: Freedom of Association and Collective Bargaining 2016	407-1 Operations and suppliers in which the right to freedom of association and collective bargaining may be at risk	p. 52				
CHILD LABOR						
GRI 3: Material Topics 2021	3-3 Management of material topics	p. 12 et seq.				
GRI 408: Child Labor 2016	408-1 Operations and suppliers at significant risk for incidents of child labor	There is no risk of child labour in the apt plants in DE, NL and CZ		X	Information not available/incomplete	Wird erst im Rahmen der Lieferantenbewertung durch Ecovadis vollständig erhoben.
FORCED OR COMPULSORY LABOR						
GRI 3: Material Topics 2021	3-3 Management of material topics	p. 52				Prozess wird innerhalb der Strategie unteretzt.
GRI 409: Forced or Compulsory Labor 2016	409-1 Operations and suppliers at significant risk for incidents of forced or compulsory labor	p. 52				
SECURITY PRACTICES						
GRI 3: Material Topics 2021	3-3 Management of material topics			X		
GRI 410: Security Practices 2016	410-1 Security personnel trained in human rights policies or procedures			X		Wird im Rahmen der Lieferantenbewertung durch Ecovadis erhoben.

RIGHTS OF INDIGENOUS PEOPLES						
GRI 3: Material Topics 2021	3-3 Management of material topics			X	Information not available/incomplete	
GRI 411: Rights of Indigenous Peoples 2016	411-1 Incidents of violations involving rights of indigenous peoples			X	Information not available/incomplete	Wird im Rahmen der Lieferantenbewertung durch Ecovadis erhoben.
LOCAL COMMUNITIES						
GRI 3: Material Topics 2021	3-3 Management of material topics	p. 16 et seq.				
GRI 413: Local Communities 2016	413-1 Operations with local community engagement, impact assessments, and development programs			X	Information not available/incomplete	Prozess wird innerhalb der Strategie untersetzt
	413-2 Operations with significant actual and potential negative impacts on local communities			X	Information not available/incomplete	Prozess zur Ermittlung wird innerhalb der Strategie untersetzt und Ergebnis kommuniziert
SUPPLIER SOCIAL ASSESSMENT						
GRI 3: Material Topics 2021	3-3 Management of material topics	p. 14 et seq., p. 53				
GRI 414: Supplier Social Assessment 2016	414-1 New suppliers that were screened using social criteria	p. 53				
	414-2 Negative social impacts in the supply chain and actions taken			X	Information not available/incomplete	Wird im Rahmen der Lieferantenbewertung durch Ecovadis erhoben.
PUBLIC POLICY						
GRI 3: Material Topics 2021	3-3 Management of material topics	p. 53				
GRI 415: Public Policy 2016	415-1 Political contributions	p. 53				
CUSTOMER HEALTH AND SAFETY						
GRI 3: Material Topics 2021	3-3 Management of material topics			X	Not applicable	apt ist Zulieferer, daher liegt die Verantwortung für Gesundheit und Sicherheit der Endkunden beim Final-stage Manufacturer
GRI 416: Customer Health and Safety 2016	416-1 Assessment of the health and safety impacts of product and service categories			X	Not applicable	s. o.
	416-2 Incidents of non-compliance concerning the health and safety impacts of products and services			X	Not applicable	s. o.
MARKETING UND KENNZEICHNUNG						
GRI 3: Material Topics 2021	3-3 Management of material topics			X	Not applicable	apt ist Zulieferer, daher liegt die Verantwortung für Gesundheit und Sicherheit der Endkunden beim Final-stage Manufacturer
GRI 417: Marketing and Labeling 2016	417-1 Requirements for product and service information and labeling			X	Not applicable	s. o.
	417-2 Incidents of non-compliance concerning product and service information and labeling			X	Not applicable	s. o.
	417-3 Incidents of non-compliance concerning marketing communications			X	Not applicable	s. o.
CUSTOMER PRIVACY						
GRI 3: Material Topics 2021	3-3 Management of material topics	p. 53				
GRI 418: Customer Privacy 2016	418-1 Substantiated complaints concerning breaches of customer privacy and losses of customer data	p. 53				

# Legal notice and contact person

## Get in touch!

### Published by

apt Holding GmbH  
Rheinpromenade 11  
40789 Monheim am Rhein  
Deutschland

T +49 2173 / 999 66 1000  
E [info.holding@apt-alu-products.com](mailto:info.holding@apt-alu-products.com)  
[www.apt-alu-products.com](http://www.apt-alu-products.com)

### Responsible for the content

Manon Gahmann  
Thorsten Koloschinski  
Joep Moling  
Irene Nehr Korn-Kayn  
Hubertus Schomacher  
Martina Vanova  
Michael Zint

### Contact/editorial team

apt Holding GmbH  
Manon Gahmann  
E [manon.gahman@apt-alu-products.com](mailto:manon.gahman@apt-alu-products.com)

### Strategic consulting on CSR sustainability communications and implementation:

RITTWEGER und TEAM GmbH, 99084 Erfurt  
[www.rittweger-team.de](http://www.rittweger-team.de)

### Image source:

unsplash  
Pages: Cover, 1, 15, 30, 41

apt Holding GmbH  
Pages: Content page, 2, 5, 6 (all images),  
9 (all images), 21, 29, 32, 35

Adobe Stock  
Pages: 11, 23 (alle Bilder)

pexels  
pages: 36 by Luis Ruiz,  
38 & 39 by Anthony Rodriguez,  
40 by Min An





**Essential parts. Essential partners.**